



Local Roadway Safety Plan

Town Council Meeting

April 13, 2022



Agenda

- What is a LRSP?
- LRSP Process
- Benefits of an LRSP
- Scope of Work/Schedule
- Project Website and Interactive Map
- Input Walk-Through
- Open Discussion/Questions



What is a Local Roadway Safety Plan (LRSP)?

Overarching Goals:

- Reduce traffic fatalities and severe injuries
- Prioritize roadway and intersection safety improvements
- Adopt a LRSP to be eligible for HSIP and MTC's One Bay Area Grants

Considers engineering and non-engineering strategies

- 5 E's of Traffic Safety: **E**ducation, **E**nforcement, **E**ngineering, **E**quity, and **E**mergency Medical Services (EMS)



LRSP Process

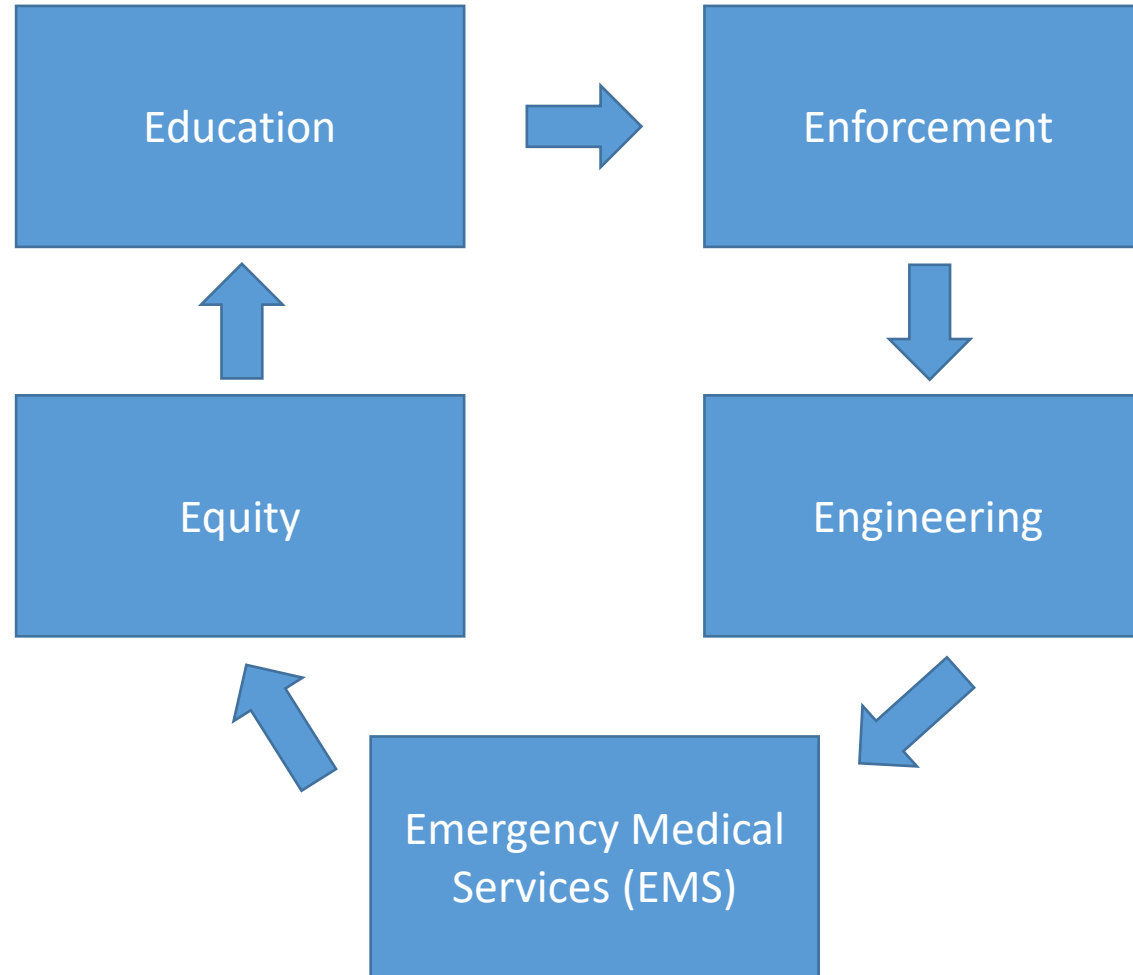
- Five-years of collision data (2015-2019) on Town roadways
- Collision analysis
 - Identification of collision trends: collision types, severity, violation category, lighting conditions, etc.
 - Geographic analysis: spatial identification of top trends
- Identification of high-injury intersections and mid-block (roadway segment) locations
- Identification of emphasis areas (address crash types, violations, or human behaviors)
- Identification of viable countermeasures and develop a countermeasure toolbox
- Develop safety projects for high-injury locations

Benefits of an LRSP

- Data driven approach to identify, analyze, and prioritize roadway safety improvements
- Considers stakeholder and community feedback to identify additional traffic safety related concerns
 - Feedback should be specific to traffic safety
- Holistic approach: incorporates more than just engineering solutions
- Allows the Town to implement a systemic approach to address collisions
- Tailored to the Town's specific traffic safety needs – based on the data
- Implementation: Town is eligible to apply for grants (HSIP and OBAG)
- LRSP does not address safety needs beyond traffic safety

The 5 E's of Traffic Safety

- Conduct focused public information and education campaigns
- Create pocket guides and informational fliers with pedestrian laws, stop sign violations, etc.
- Safe Routes to School education programs
- Consideration of impact of collisions on disadvantaged communities



- Targeted enforcement at high-injury intersections
- Place high priority on enforcement of violation type that contribute to the most fatalities and severe injuries
- HSIP eligible countermeasures
- E.g.: Improve intersection lighting, install median refuge island, install bulb outs, improving signs and striping

- Improve deployment to collision sites
- Ensure emergency routes are defined and clear

Moraga LRSP Scope of Work

- Task 1: Visioning, Project Initiation, and Management
- Task 2: Document Review
- Task 3: Data Collection
- Task 4: Collision and Roadway Data Analysis
- Task 5: Proposed Ordinances and Policies
- Task 6: Countermeasure Selection
- Task 7: Develop Safety Projects
- Task 8: Final LRSP
 - Includes grant ready materials for two HSIP applications



Schedule

Task	February				March				April				May				June			
	1	2	3	4	5	6	7	8	9	10	11	12	13	14	15	16	17	18	19	20
Task 1. Visioning, Project Initiation, & Management																				
Subtask 1.1 Kick-Off Meeting				M																
Subtask 1.2 Monthly Meetings & Schedule Updates								M				M				M				
Subtask 1.3 Virtual Stakeholder & Town Council Meetings*										M	M					M	M			M
Subtask 1.4 Community Engagement																				
Task 2. Document Review																				
Task 3. Data Collection																				
Task 4. Collision & Roadway Data Analysis																				
Subtask 4.1 Systemic Safety Analysis & Trend Analysis																				
Subtask 4.2 Identify High Risk Network																				
Task 5. Proposed Ordinance & Policies																				
Task 6. Countermeasure Selection																				
Subtask 6.1 Emphasis Areas																				
Subtask 6.2 Countermeasure Toolbox																				
Task 7. Develop Safety Projects																				
Subtask 7.1 Safety Projects, Cost Estimate, & BCR Analysis																				
Subtask 7.2 Implementation Program																				
Task 8. Final Local Roadway Safety Plan (LRSP)																				

Project Website

[Project Overview](#)[Report Concern](#)[Collision History](#)[Project Updates](#)[Provide Feedback](#)[Subscribe & Contact](#)

LOCAL ROADWAY SAFETY PLAN

Project Overview

The Town of Moraga is developing a comprehensive Local Roadway Safety Plan (LRSP). The LRSP would enable the Town to enhance traffic safety for all

Provide Input



Report Your Area of Concern

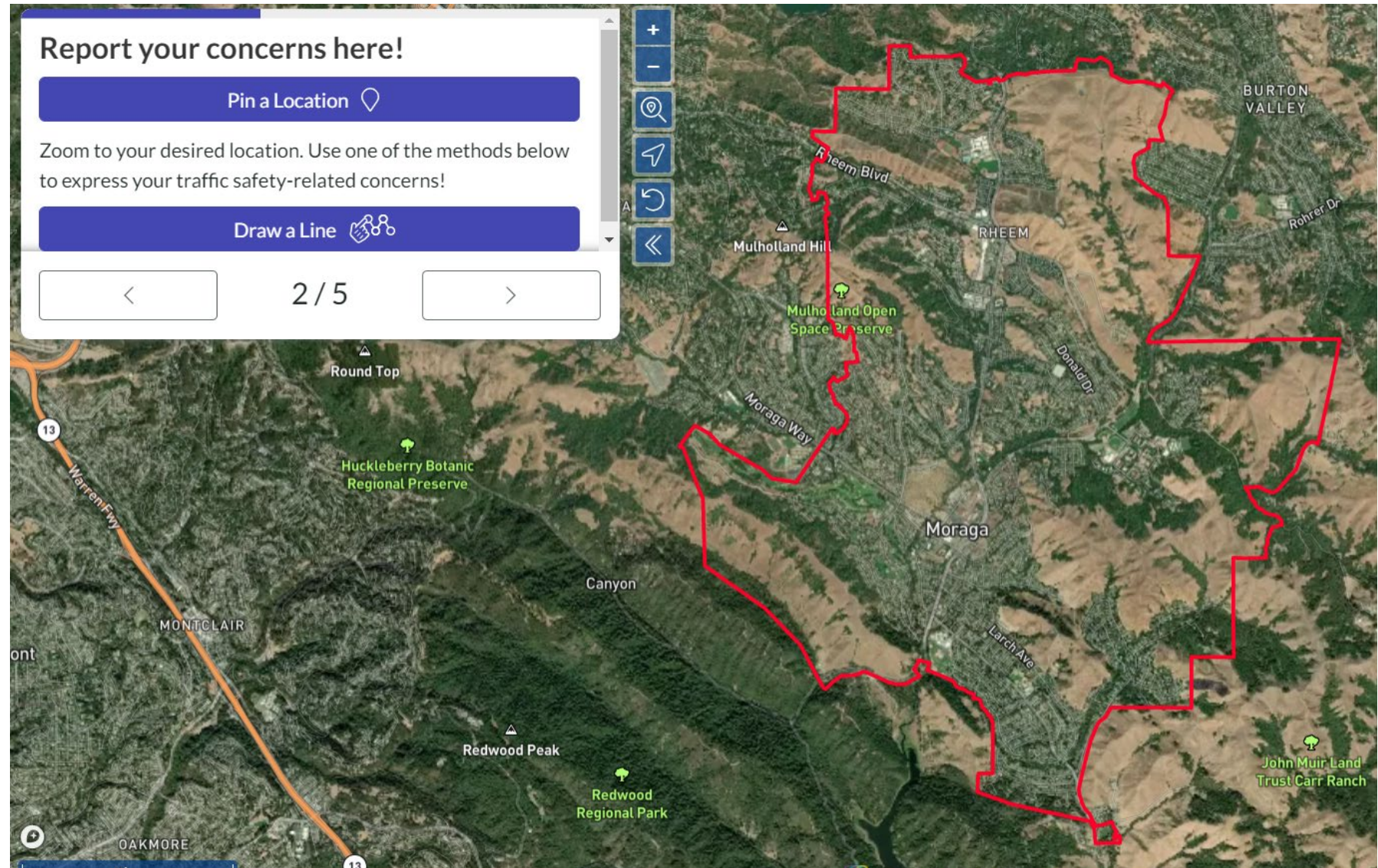
Your input is essential for the success of this Local Roadway Safety Plan. Click the button below to provide us with your concerns regarding traffic and safety.

Report Your Area of Concern

CLICK HERE!

For further updates, check project updates or subscribe to receive notifications.

Tell us your concerns on the map!

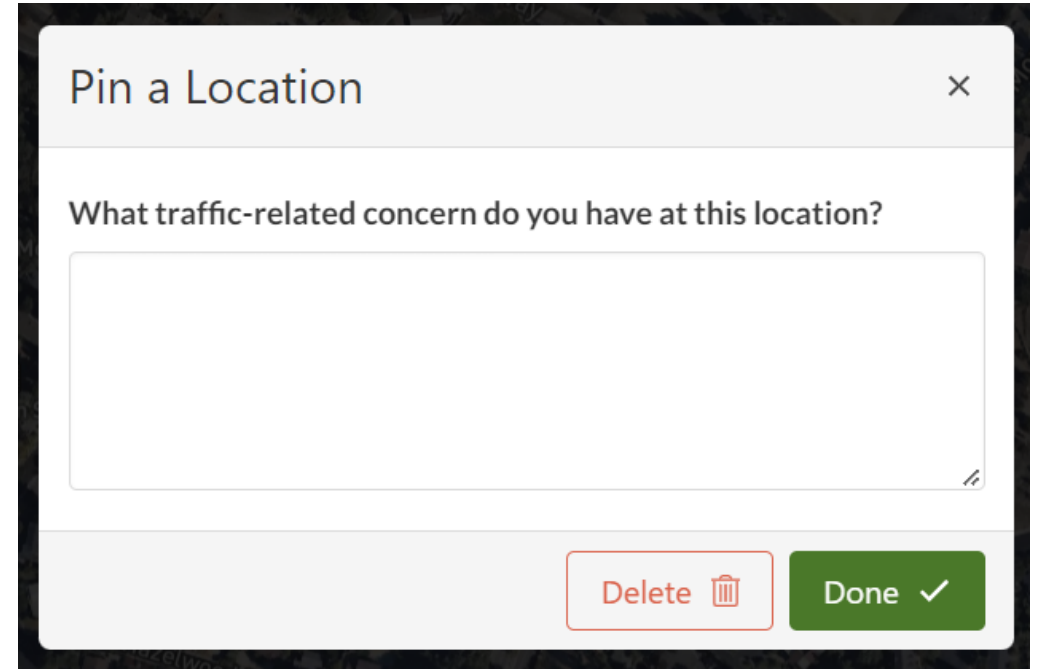


Example Feedback

- Drivers often speed along this segment of road
- Crossing the street is difficult at this intersection
- Cars don't stop at a stop sign
- Please add bicycle lanes here



Keep In Mind

- Feedback should be limited to concerns related to traffic safety

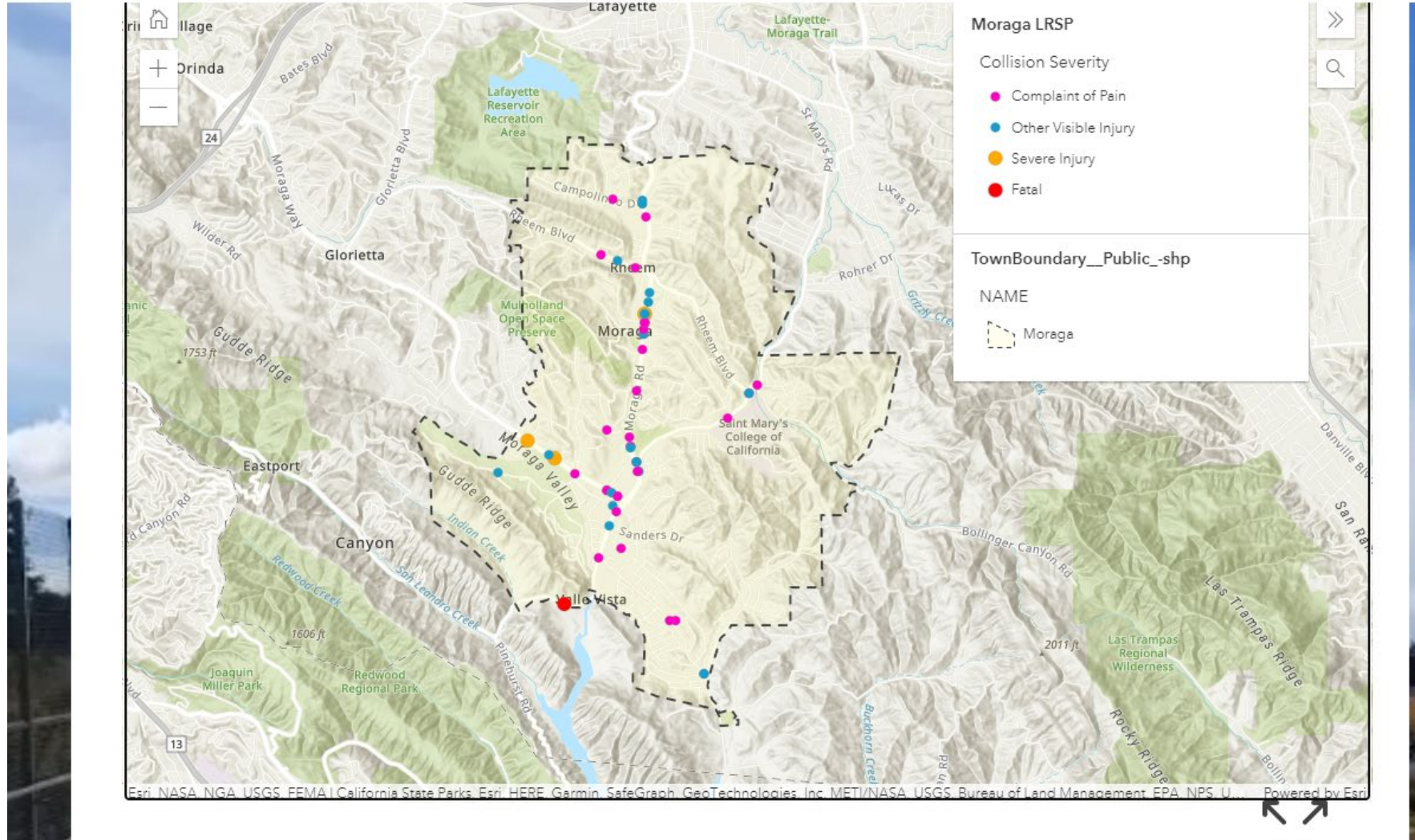


Pin a Location ×

What traffic-related concern do you have at this location?

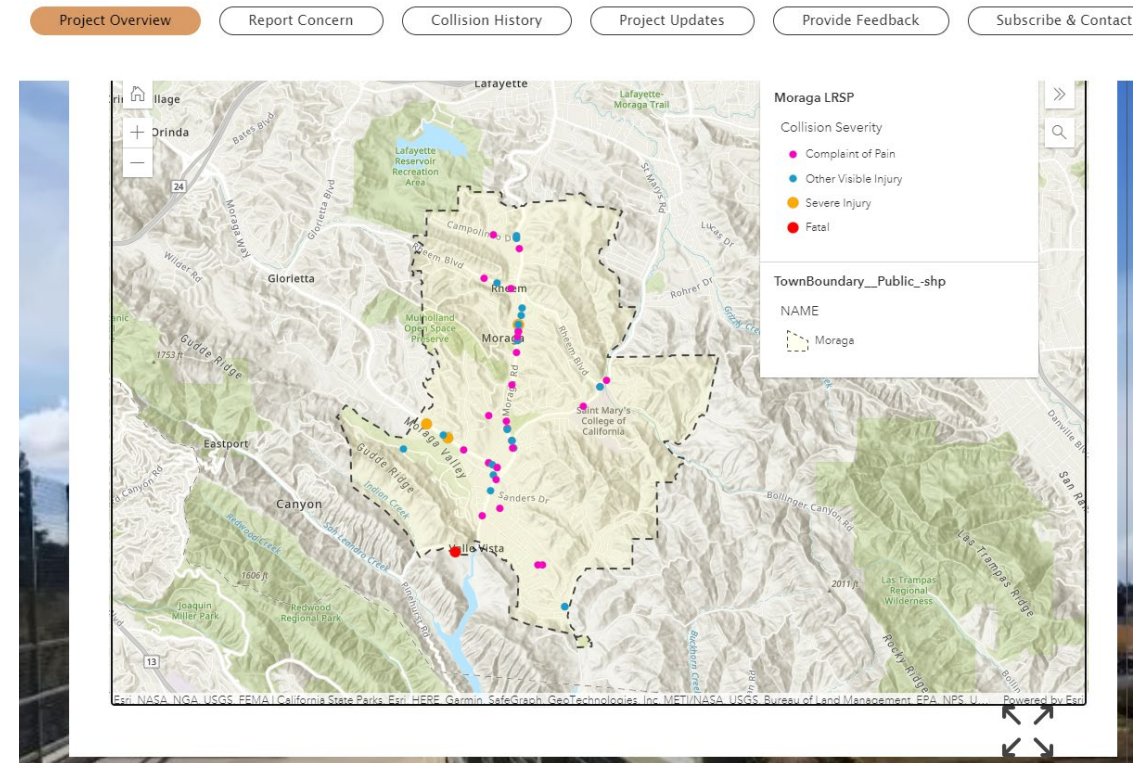
Delete  Done 

Collision Data (2015-2019)

[Project Overview](#)[Report Concern](#)[Collision History](#)[Project Updates](#)[Provide Feedback](#)[Subscribe & Contact](#)

Collision Data (2015-2019)

- More collisions occur on main arterials: Moraga Road, Moraga Way, Rheem Boulevard, and St Mary's Road
- Several are fatalities or severe injuries, on Moraga Road, Moraga Way, and Canyon Road
- Previous collision data used to calculate Benefit/Cost ratio when applying for funds
- Raw data is preliminary and will be further analyzed





Council Feedback & Questions