



Laguna Creek Restoration Project

Hacienda de las Flores Pavilion Building





Undersized Culvert

In 2014, ten alternatives to eliminate the flooding

1. No build (i.e., do nothing)
2. Line inside of existing culvert with smooth lining
3. & 4. Configurations of parallel 9-ft reinforced concrete pipe culvert
5. Replace existing culvert with larger 14-ft by 12-ft culvert
6. Install upstream detention basin
7. Raise Pavilion floor elevation above 100-year flood elevation
8. Relocate entire Pavilion structure outside 100-year floodplain
9. Construct flood wall around Pavilion
10. Daylight and restore Laguna Creek to contain 100-year flow

Daylight and Restore the Natural Channel



Removing the existing 8-foot diameter culvert adjacent to the Pavilion building



Constructing a natural channel with habitat for endangered species



Relocating a sanitary sewer line



Constructing a vehicular bridge over the creek



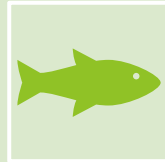
Installing public improvements such as the trail



Grant Funding



Proposition 13 River Parkways
Grant Program (CNRA)



Measure WW Urban Creeks Grant
Program (EBRPD)



Hazard Mitigation Grant Program
(FEMA)

Existing ADA Parking



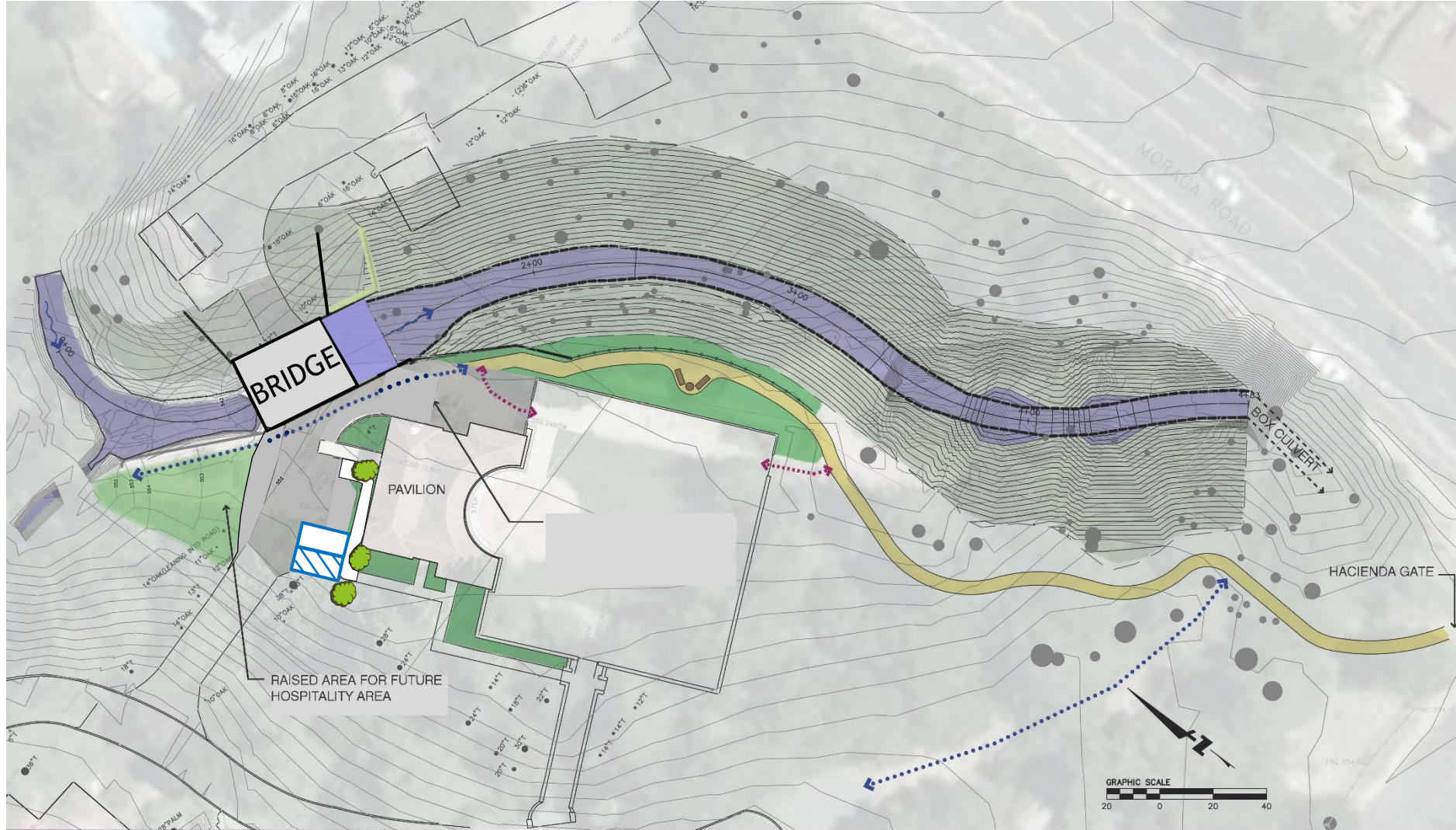
- ORNAMENTAL PLANTING BUFFER, NATIVES CREEKSIDE
- RIPARIAN WOODLAND PLANTING, NATIVE OAKS




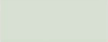


- NEW 5' WIDE MINIMUM TRAIL - MULCH OR D.G.
- ASPHALT PAVING - VEHICULAR CIRCULATION

- PAVILION CIRCULATION
- TRAIL CIRCULATION

Accessible Parking

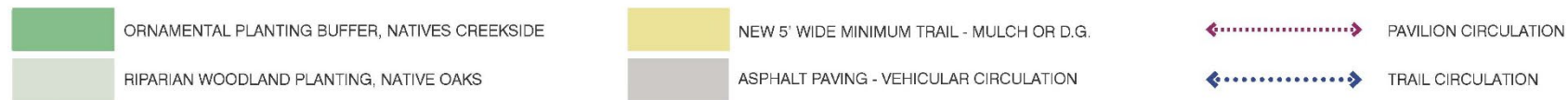
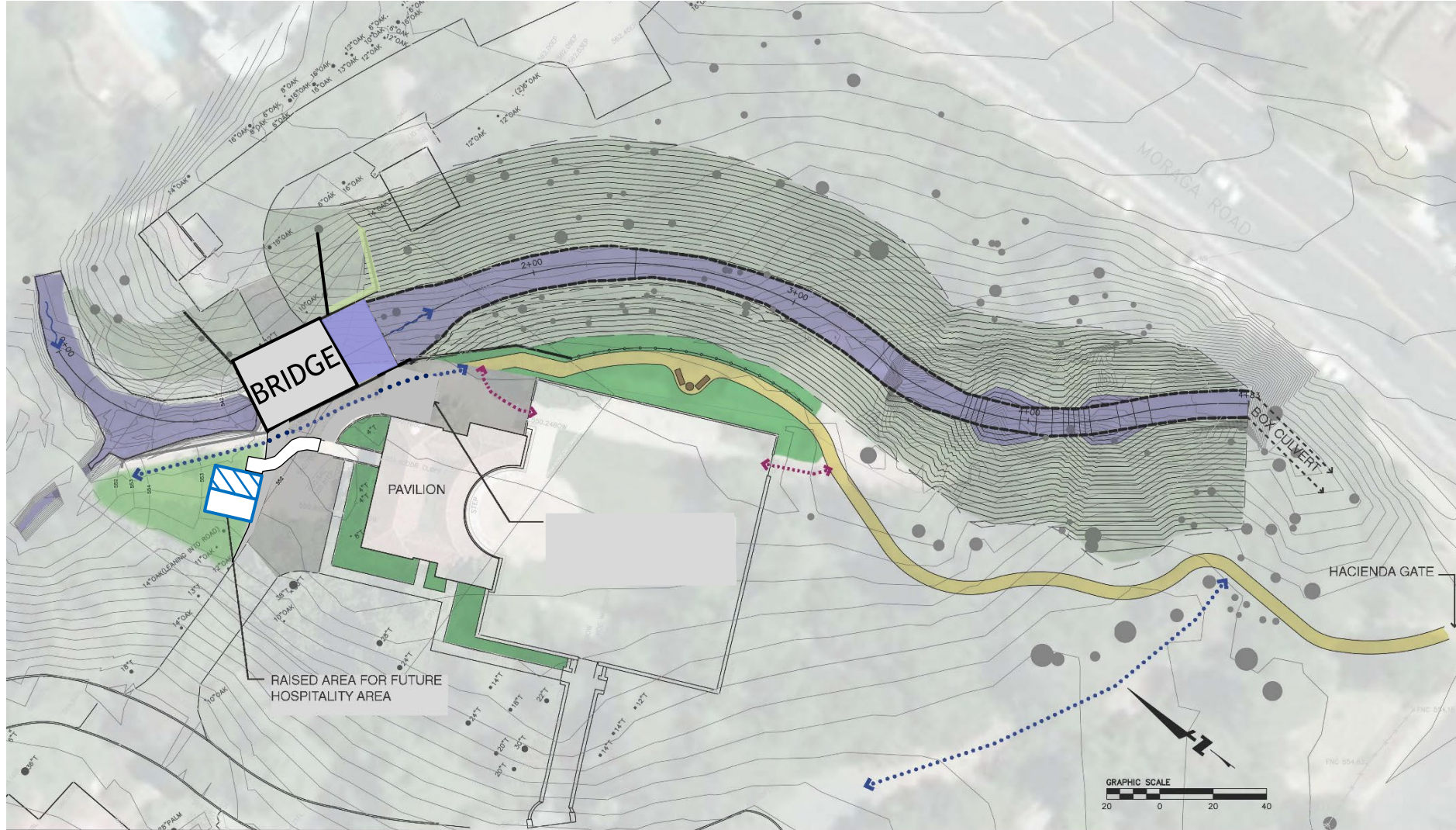
- ▶ 35' Bridge
- ▶ Parking Moves
- ▶ Trail Connects



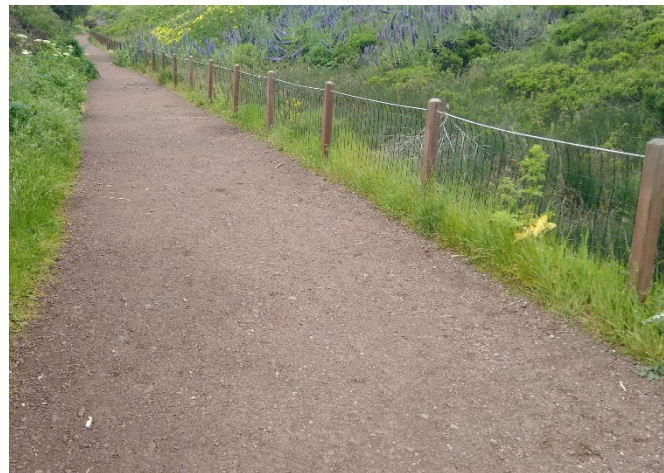
	ORNAMENTAL PLANTING BUFFER, NATIVES CREEKSIDE		NEW 5' WIDE MINIMUM TRAIL - MULCH OR D.G.		PAVILION CIRCULATION
	RIPARIAN WOODLAND PLANTING, NATIVE OAKS		ASPHALT PAVING - VEHICULAR CIRCULATION		TRAIL CIRCULATION

Accessible Parking

- ▶ 35' Bridge
- ▶ Parking Moves
- ▶ Trail Connects



Trail



Guardrail Materials



Park and Recreation Commission

March 15

March 24

Town Council



The background of the slide features a large, faint, light-green seal of Moraga County. The seal is circular and contains a landscape with a sunburst at the top, a mountain range in the middle, and a body of water at the bottom. The words "MORAGA COUNTY" are written around the perimeter of the seal. The seal is partially obscured by a large, dark-green, abstract geometric shape on the right side of the slide.

Mark Summers
Feel free to contact me at:
(925) 888-7038
msummers@moraga.ca.us

[https://www.moraga.ca.us/465/
Laguna-Creek-Restoration-Project](https://www.moraga.ca.us/465/Laguna-Creek-Restoration-Project)