

# Moraga-Orinda Fire District

## Report to Council: Canyon Road Bridge Closure

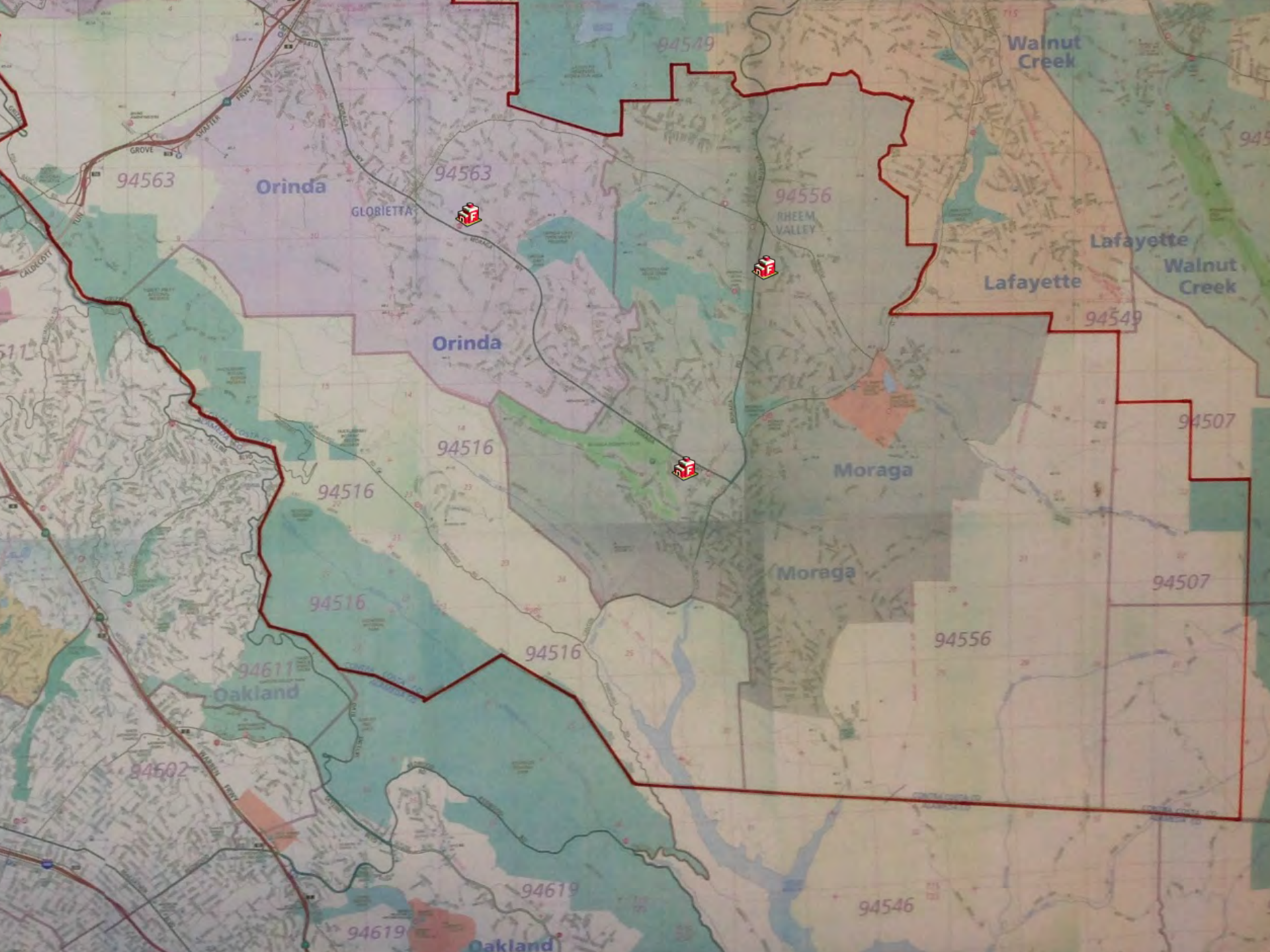


April 2017

Stephen Healy, Fire Chief

# Incident Types and Frequency in Community of Canyon – Last 365 days

■ EMS	8
■ Vehicle Accid.	5
■ Other	4
■ Vegetation Fire	3
■ Vehicle Fire	1
■ False	1
■ Structure Fire	<u>0</u>
TOTAL	22



94563

Orinda

GLOBIETTA

94563

Orinda

94516

94516

94516

94611

Oakland

94602

94619

94619

Oakland

94549

94556

RHEEM VALLEY

Moraga

94556

94546

Walnut Creek

Lafayette

Lafayette

Walnut Creek

94549

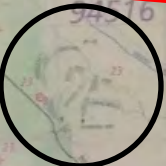
94507

94507



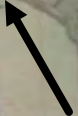
**COMMUNITY  
OF CANYON**

**CANYON ROAD BRIDGE**



COMMUNITY OF CANYON

3.2 MILES  
8 MIN.



CANYON ROAD BRIDGE



Orinda

GLOBIETTA

Orinda

Lafayette

Lafayette

Walnut Creek

Moraga

Moraga

Oakland

Oakland

COMMUNITY OF CANYON

3.2 MILES  
8 MIN.

CANYON ROAD BRIDGE

11.2 MILES  
22 MIN.

12.9 MILES  
25 MIN.

3.6 MILES  
11 MIN.

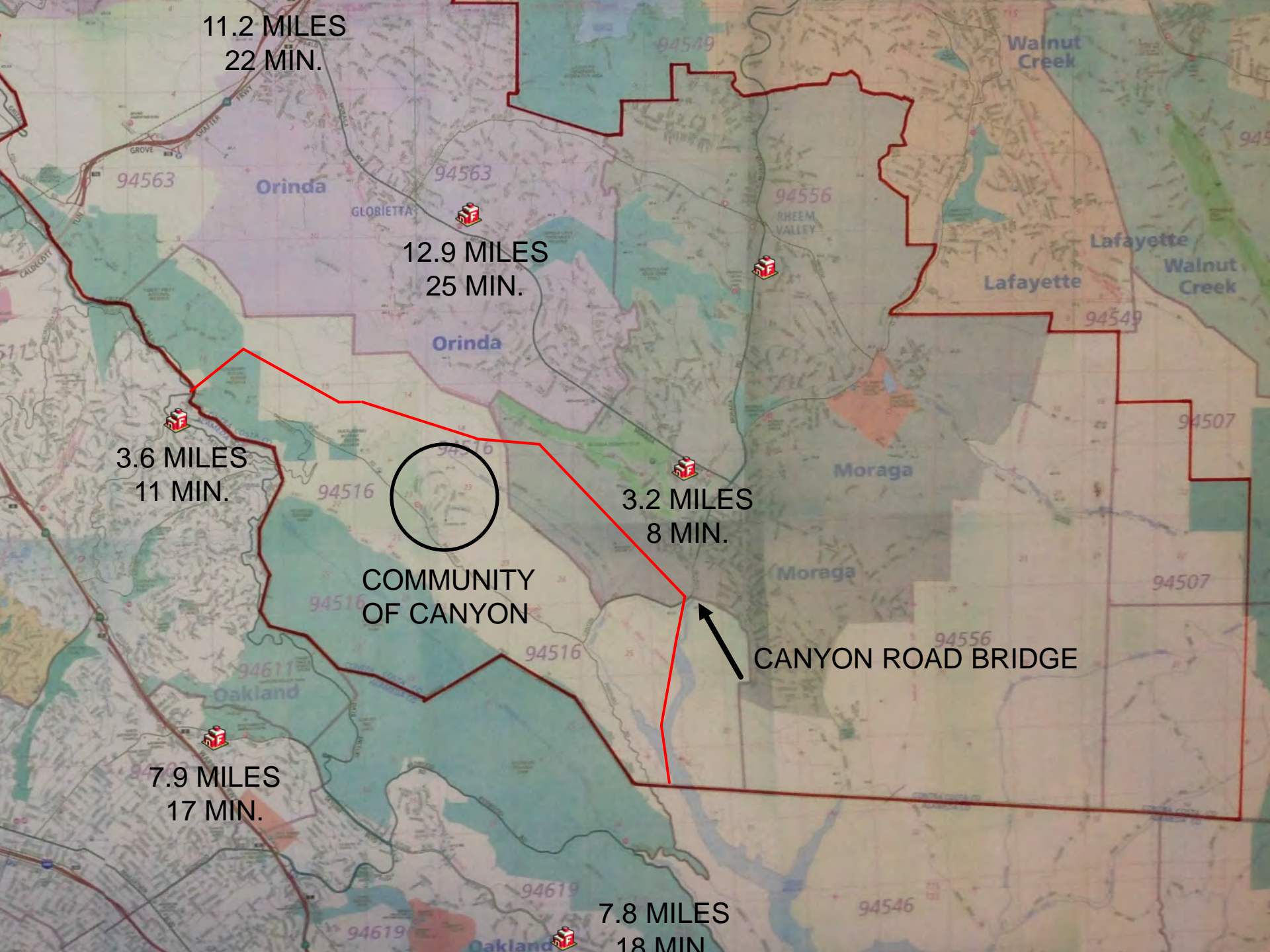
3.2 MILES  
8 MIN.

7.9 MILES  
17 MIN.

7.8 MILES  
18 MIN.

COMMUNITY  
OF CANYON

CANYON ROAD BRIDGE



# Current Response Plan

- Oakland Fire and Paramedics Plus Ambulance agreed to provide mutual aid from Alameda County.
- To provide redundancy, MOFD will still send an ambulance and paramedic-engine from Orinda or Moraga.
- MOFD continues to evaluate alternatives